

***Paragon***



## *We're Paragon*

- **Our Mission**
- **The Vision**

## *Where's Paragon*

- **Customer Market**

## *Wear Paragon*

- **Product Overview**
- **In Line Comparisons**
- **Decorating Tips**
- **Thank You!**



# Our Mission

---

*As we approach five decades of innovation at Paragon Sportswear our core mission remains unwavering.*

*"Manufacturing quality garments for indoor/outdoor wearability with style, comfort, and protection sewn into every stitch."*

# The Vision

We're Paragon

*Actively engaging with our customers allows us to continuously reimagine and provide innovative market leading products. Each meticulously designed to enhance their success.*

*Performance Polos is how it all began. Inspired by the burgeoning outdoor lifestyle embracement, we've expanded our focus on developing products that address the growing awareness and demand for enhanced sun and heat protection. Utilizing the finest yarns and fabrics to ensure unparalleled comfort and performance in extreme environments.*

*Our garments are designed to optimize decoration placement and printing outcomes, utilizing various techniques such as sublimation, screen printing, embroidery, and direct to film.*

*At the heart of our collection lies a range of lightweight and breathable fabrics that provide exceptional UPF Sun Protection, Style, and a full-spectrum of brilliant colors crafted with purpose and value.*



# Where Paragon Lives...

## **A GUIDE TO WHO BUY'S PARAGON SPORTSWEAR**

### **RETAIL**

- Hotel & Resort Shops
- Country Clubs & Golf Shops
- Spas
- Restaurant, Brewery, & Coffee Shops
- Amusement and Water Parks
- Fishing & Tour Charters

### **STAFF & UNIFORM**

- Restaurant, Casino & Resort
- Valet & Pool Service
- Golf Course Staff
- Landscape & Construction
- Lifeguards
- Corporate Apparel
- Service Team Uniforms
- School Uniforms
- Military



A photograph of two men standing on a beach. The man on the left is facing forward, wearing a light blue long-sleeved shirt and dark pants. The man on the right is seen from the back, wearing a white long-sleeved shirt and dark pants. The background shows the ocean and a cloudy sky.

*Where Paragon Lives...*

## **RECREATION**

### **EVENTS**

- Corporate Events
  - Music Concerts & Festivals
  - Fishing & Golf Tournaments
  - Non-Profit/Fundraising Events
  - School/University Spirit wear
- Fishing/ Deep Sea/ Fly
  - Hiking
  - Paddle-boarding
  - Outdoor Team Sports
  - Golfing
  - Coaching

A man with a beard, wearing a grey cap, sunglasses, and a grey long-sleeved shirt with a shoulder strap, is crouching by a river. He is holding a pair of silver pliers. The background shows a river with rocks and trees. The text 'WEAR Paragon' is overlaid on the right side of the image.

WEAR  
**Paragon**

PRODUCT OVERVIEW



WOVENS

WEAR  
**Paragon**



## PERFORMANCE QUALITIES

- 100% Rip Stop Performance Polyester 2.4 oz
- UPF40+ Sun Protection
- Paragon Plus Moisture & Odor Management
- Wrinkle Resistant Finish
- Multi-Use Pockets
- Back Shoulder Vents with Mesh Inserts
- Velcro Strap Rod Holder (Men's Only)

700 - 702 Sizes: XS-4XL

704 Sizes: XS-3XL



**700**

**HATTERAS**

**9 COLORS**



**702**

**KITTY HAWK**

**9 COLORS**



**704**

**LADY HATTERAS**

**3 COLORS**

*Wovens*



MOSSY OAK  
PRINTS



**MOSSY OAK®**

WEAR  
**Paragon**

## PERFORMANCE QUALITIES

- 100% Microfiber Performance Polyester
- UPF50+ Sun Protection
- Paragon Plus Moisture & Odor Management
- Wrinkle Resistant Finish
- Sublimated Mossy Oak Prints
- ParagonXP Tear away Label

Sizes: XS-4XL



# Mossy Oak Prints

A man and a woman are shown from the chest up. The man is on the left, wearing a light green polo shirt with a subtle palm tree pattern. The woman is on the right, wearing a light blue polo shirt. She has long brown hair and is looking up at the man. Her hands are resting on his waist; she is wearing a white smartwatch and a ring. The background is a gradient from light to dark.

SUBLIMATED  
POLOS

WEAR  
**Paragon**

## **PERFORMANCE QUALITIES**

- 95% Microfiber Polyester/5% Spandex  
Micro Mesh 4.7 oz
- UPF30+ Sun Protection
- Paragon Plus Moisture & Odor Management
- Wrinkle Resistant Finish
- Tagless Label

Sizes: S-4XL



**154**  
**CHARLESTON**  
3 COLORS



**155**  
**AIKEN**  
4 COLORS



**156**  
**BRUNSWICK**  
4 COLORS

# *Sublimated Polos*

# Sublimated Polos

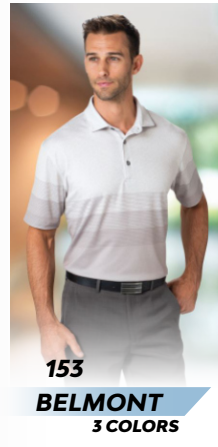
## PERFORMANCE QUALITIES

- 95% Microfiber Polyester/5% Spandex 4.7 oz
- UPF30+ Sun Protection
- Paragon Plus Moisture & Odor Management
- Wrinkle Resistant Finish
- Tagless Label

Sizes: S-4XL



**4 COLORS**



**3 COLORS**

## **PERFORMANCE QUALITIES**

- 100% Microfiber Polyester Interlock 5 oz
- UPF30+ Sun Protection
- Paragon Plus Moisture & Odor Management
- Wrinkle Resistant Finish
- Tagless Label

Sizes: S-4XL

## *Sublimated Polos*



**170**

**NEWPORT**

**4 COLORS**



**171**

**MONTEREY**

**5 COLORS**



A close-up photograph of a person's torso wearing a vibrant green polo shirt. The shirt has a classic collar and two visible buttons. The background is a blurred cityscape.

SOLID  
POLOS

WEAR  
**Paragon**



# Solid Polos

## PERFORMANCE QUALITIES

- 100% Microfiber Polyester Micro Mesh 4.3 oz
- UPF30+ Sun Protection
- Paragon Plus Moisture & Odor Management
- Wrinkle Resistant Finish
- Snag Resistant Finish
- Tagless Label

100 Sizes: S-6XL  
104 Sizes: XS-3XL  
108Y Sizes: XS-XL



**100**

**SARATOGA**

**22 COLORS**



**104**

**LADY SARATOGA**

**21 COLORS**



**108Y**

**YOUTH SARATOGA**

**12 COLORS**

## **PERFORMANCE QUALITIES**

- 100% Microfiber Polyester Micro Mesh 4.3oz
- UPF30+ Sun Protection
- Paragon Plus Moisture & Odor Management
- Wrinkle Resistant Finish
- Snag Resistant Finish
- Tagless Label

110 Sizes: S-3XL  
120 Sizes: XS-3XL



**110**

**PRESCOTT**  
5 COLORS



**120**

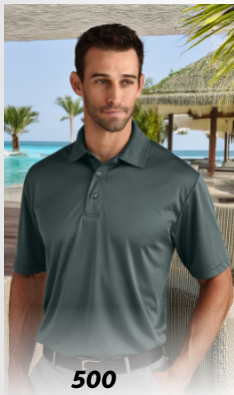
**LADY PALM**  
10 COLORS

# *Solid Polos*

## **PERFORMANCE QUALITIES**

- 100% Performance Interlock 4 oz
- UPF30+ Sun Protection
- Paragon Plus Moisture & Odor Management
- Wrinkle Resistant Finish
- Snag Resistant Finish
- Tagless Label

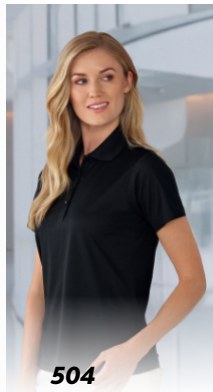
**500 Sizes: S-6XL**  
**504 Sizes: XS-3XL**



**500**

**SEBRING**

**8 COLORS**



**504**

**LADY SEBRING**

**8 COLORS**

# Solid Polos

## PERFORMANCE QUALITIES

- 100% Performance Mini Mesh 4 oz
- UPF30+ Sun Protection
- Paragon Plus Moisture & Odor Management
- Wrinkle Resistant Finish
- Snag Resistant
- Tearaway Label

550 Sizes: S-6XL  
554 Sizes: XS-3XL  
558Y Sizes: S-XL



**550**

**MARCO**

7 COLORS



**554**

**LADY MARCO**

7 COLORS



**558Y**

**YOUTH MARCO**

7 COLORS

A man with a beard and sunglasses is shown from the chest up, wearing a light-colored sublimated hoodie with a teal and pink camouflage pattern on the sleeves and hood. He is holding the hood up with both hands. The background is a bright, sunny outdoor scene with a blue sky and water.

SUBLIMATED TEES  
& HOODIE TEES

WEAR  
**Paragon**

## **PERFORMANCE QUALITIES**

- 100% Microfiber Performance Polyester 4.1 oz
- UPF50+ Sun Protection
- Paragon Plus Moisture & Odor Management
- Wrinkle Resistant Finish
- Paragon Sublimated Ombre Prints
- ParagonXP Tear away Label

Sizes: XS-4XL

## *Sublimated Tees & Hoodie Tees*



**225**

**BARBADOS**

**6 COLORS**



**233**

**MAUI**

**6 COLORS**

## **PERFORMANCE QUALITIES**

- 100% Microfiber Performance Polyester 4.1 oz
- UPF50+ Sun Protection
- Paragon Plus Moisture & Odor Management
- Wrinkle Resistant Finish
- Paragon Sublimated Fade Prints
- ParagonXP Tear away Label

Sizes: XS-4XL

## *Sublimated Tees & Hoodie Tees*



## **PERFORMANCE QUALITIES**

- 100% Microfiber Performance Polyester 3.5 oz
- UPF50+ Sun Protection
- Paragon Plus Moisture & Odor Management
- Wrinkle Resistant Finish
- Paragon Sublimated Hex Camo Prints
- ParagonXP Tear away Label

Sizes: XS-4XL

## *Sublimated Tees & Hoodie Tees*



**216**

**CAYMAN**

**11 COLORS**



**217**

**POMPANO**

**5 COLORS**



## **PERFORMANCE QUALITIES**

- 100% Microfiber Performance Polyester 3.5 oz
- UPF50+ Sun Protection
- Paragon Plus Moisture & Odor Management
- Wrinkle Resistant Finish
- Paragon Sublimated Watermark & Camo Prints
- ParagonXP Tear away Label

Sizes: XS-4XL

## *Sublimated Tees & Hoodie Tees*



**228**

**CABO**

**5 COLORS**



**238**

**WOODLAND**

**4 COLORS**

## **PERFORMANCE QUALITIES**

- 93% Microfiber Polyester/ 7% Spandex 4.4 oz
- UPF50+ Sun Protection
- Paragon Plus Moisture & Odor Management
- Wrinkle Resistant Finish
- Paragon Sublimated Water Prints
- ParagonXP Tear away Label

Sizes: XS-4XL

## *Sublimated Tees & Hoodie Tees*



**230**

**BELIZE**

**4 COLORS**



**231**

**PANAMA**

**4 COLORS**

## **PERFORMANCE QUALITIES**

- 100% Microfiber Performance Polyester 4.1 oz
- UPF50+ Sun Protection
- Paragon Plus Moisture & Odor Management
- Wrinkle Resistant Finish
- Paragon Sublimated Mangrove Camo Prints
- ParagonXP Tear away Label

Sizes: XS-4XL

## *Sublimated Tees & Hoodie Tees*



**240**

**TORTUGA HOODIE TEE**

**6 COLORS**



SOLID TEES &  
HOODIE TEES

WEAR  
**Paragon**

## **PERFORMANCE QUALITIES**

- 100% Microfiber Performance Polyester 3.5 oz
- UPF50+ Sun Protection
- Paragon Plus Moisture & Odor Management
- Wrinkle Resistant Finish
- Tear away Label
- Sublimation Friendly

**210 Sizes: XS-6XL**

**214 Sizes: XS-3XL**



**210**

**LONG ISLANDER**

**25 COLORS**

## *Solid Tees & Hoodie Tees*



**214**

**LADY LONG ISLANDER**

**8 COLORS**

## **PERFORMANCE QUALITIES**

- 100% Microfiber Performance Polyester 3.5 oz
- UPF50+ Sun Protection
- Paragon Plus Moisture & Odor Management
- Wrinkle Resistant Finish
- Tear away Label
- Sublimation Friendly

218Y Sizes: S-XL

218T Sizes: 2T, 3/4T, 5/6T



**218Y**

**YOUTH LONG ISLANDER**

**12 COLORS**

## *Solid Tees & Hoodie Tees*



**218T**

**TODDLER LONG ISLANDER**

**4 COLORS**

## **PERFORMANCE QUALITIES**

- 93% Microfiber Performance Polyester/  
7% Spandex 4.4 oz
- 4 Way Stretch
- UPF50+ Sun Protection (Tests above 100+)
- Paragon Plus Moisture & Odor Management
- Wrinkle Resistant Finish
- ParagonXP Tear away Label
- Sublimation Friendly

**Sizes: XS-4XL**

## *Solid Tees & Hoodie Tees*



**222**

**ARUBA**

**11 COLORS**

## **PERFORMANCE QUALITIES**

- 100% Microfiber Performance Polyester 3.5 oz
- UPF50+ Sun Protection
- Paragon Plus Moisture & Odor Management
- Wrinkle Resistant Finish
- Tear away Label
- Sublimation Friendly

200 Sizes: S-6XL  
204 Sizes: XS-3XL



**200**

**ISLANDER**

**25 COLORS**

## *Solid Tees & Hoodie Tees*



**204**

**LADY ISLANDER**

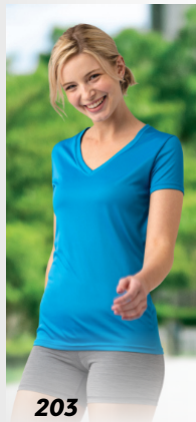
**12 COLORS**



## **PERFORMANCE QUALITIES**

- 100% Microfiber Performance Polyester 3.5 oz
- UPF50+ Sun Protection
- Paragon Plus Moisture & Odor Management
- Wrinkle Resistant Finish
- Tear away Label
- Sublimation Friendly

**203 Sizes: XS-3XL**  
**208Y Sizes: S-L**



**203**

**VERA**

**9 COLORS**

## *Solid Tees & Hoodie Tees*



**208Y**

**YOUTH ISLANDER**

**11 COLORS**

## **PERFORMANCE QUALITIES**

- 100% Microfiber Performance Polyester 3.5 oz
- UPF50+ Sun Protection
- Paragon Plus Moisture & Odor Management
- Wrinkle Resistant Finish
- Tear away Label
- Sublimation Friendly

**220 Sizes: XS-4XL**

**221Y Sizes: S-XL**



**220**  
**BAHAMA HOODIE TEE**

**20 COLORS**



**221Y**  
**YOUTH BAHAMA HOODIE TEE**

**7 COLORS**

# *Solid Tees & Hoodie Tees*



# DO YOU KNOW YOUR POLOS?

## GOOD



**MARCO** STYLE# 550/554

**Budget Friendly  
High Style**

- 100% Performance Poly Mini Mesh - 4 oz.
- UPF 30+ Protection
- Paragon+ Moisture & Odor Management
- Snag Resistant
- Wrinkle Resistant
- Tear Away Label
- 7 Colors

**Available Sizes:**

Men's: S-6XL Ladies: XS-3XL Youth: S-XL

## BETTER



**SEBRING** STYLE# 500/504

**Durable, Dependable  
Value Priced**

- 100% Performance Poly Interlock - 4 oz.
- UPF 30+ Protection
- Paragon+ Moisture & Odor Management
- Snag Resistant
- Wrinkle Resistant
- Tagless Label
- 8 Colors

**Available Sizes:**

Men's: S-6XL Ladies: XS-3XL

## BEST



**SARATOGA** STYLE# 100/104

**Top Seller  
20 Great Colors**

- 100% Microfiber Performance Poly - 4.3 oz.
- Micro Mesh
- UPF 30+ Protection
- Paragon+ Moisture & Odor Management
- Snag Resistant
- Wrinkle Resistant
- Tagless Label
- 20+ Colors

**Available Sizes:**

Men's: S-XL Ladies: XS-3XL Youth: XS-XL



# DO YOU KNOW YOUR LONG SLEEVE TEE'S?

## BETTER



**Long Islander** STYLE# 210

**Value Priced  
Top Seller w/25 Colors**

- 100% Microfiber Performance Polyester Jersey 3.5 oz
- Paragon Plus Moisture and Odor Management
- UPF50+ Sun Protection
- Wrinkle Resistant Finish
- Tear away Label
- Sublimation Friendly
- 25 Colors

**Available Sizes:**  
XS-6XL

## BEST



**ARUBA** STYLE# 222

**Maximum Comfort, Stretch,  
& Sun Protection**

- 93% Microfiber Performance Polyester/7% Spandex 4.4 oz
- Paragon Plus Moisture and Odor Management
- UPF50+ Sun Protection (Test Results over 100+)
- 4 Way Stretch
- Knit for Complete Opacity
- Wrinkle Resistant Finish
- ParagonXP Sublimated Necktape
- ParagonXP Tear away Label
- Sublimation Friendly
- 11 Colors

**Available Sizes:**  
XS-4XL

# Garment Decorating TIPS

## SCREEN PRINTING

- We recommend Poly Performance low cure inks.
- Use a gray blocker base when printing light-colored inks on dark fabrics.
- Reduce dryer temperature to a maximum of 310 degrees when curing.
- Allow time for garment to cool prior to stacking.
- Periodically use test heat strips to ensure dryer temperature is staying consistent.
- When printing on sublimation, garment must be laid flat on dryer belt to avoid transferring the print to other areas of the garment.

## DYE SUBLIMATION

- Recommended heat setting is 370-380 depending on colors within design. Heat and/or dwell time may affect your output color. It is always best practice to test print sample first before production
- Dwell time should be 40-42 seconds.
- Heat press pressure is Medium
- Do not let the garment come in direct contact with the heat plate. Always have a layer of paper between the press and garment.



# Garment Decorating TIPS

## DIRECT TO FILM (DTF)

- Recommended temperature for press should be set to 275-290 degrees
- Always test a sample to determine which is the best temperature to use on your press
- Dwell time at medium pressure should be 7-9 seconds, remove film (Actual Dwell time may vary depending on the type of adhesive)
- Repress for another 7-9 seconds using a Teflon sheet to protect the design
- For Cool Peel Films, remove the fabric from press and allow it to cool completely before peeling off the film
- For Hot Peel Films, remove the film immediately after pressing

## EMBROIDERY

- Choose backings designed for performance wear. Cutaway backing was designed to reduce puckering when embroidering stretchy microfiber performance shirts and will minimize show-through. For extra stabilization, combine it with a medium weight tear away backing. The more stable the fabric, the better the result. When hooping, make sure you do not stretch out the shirt. If your embroidery looks great in the hoop but puckers when you remove it, you stretched the shirt too much while hooping.
- Use a smaller needle. A ballpoint embroidery needle will avoid cutting the fabric and causing runs.
- Digitize your designs to stitch from the center out, this reduces stretch and helps to prevent distortion and puckering. Keep stitch density to a minimum and avoid designs with too much density. When digitizing, pay attention to the push and pull of the fabric. When lettering, try thickening the columns by about 10%-15% and shortening the ends of columns by the same amount. The resulting letters will line up better. An underlay can also help by basting the fabric to the stabilizer.
- Practice before you embroider a customer's shirt for the first time. Practicing removes fear and will let you experiment to find the correct combinations that produce the best designs.



# Thank you!

*At Paragon, we love reimagining the possibilities. We asked: What if polos could be as fun, colorful and adventurous as tees?*

*Answered! Our new lifestyle prints and patterns expand on our collection of timeless polo styles and colors.*

*This is just one example of bringing the spirit and trends of retail fashion to the wholesale and corporate apparel market. You'll find plenty of other fresh ideas across our product line.*

*We got here because of you.*

*We're listening to your feedback as the workplace continues to evolve at light speed. You need the right partner focusing on the big picture as well as the smallest details – to factor in quality, convenience, versatility and most of all, value. It means looking at challenges from a different perspective. And leaning into solutions that lead to shared success.*

*Thank you for joining us on this journey!*



**Paragon**